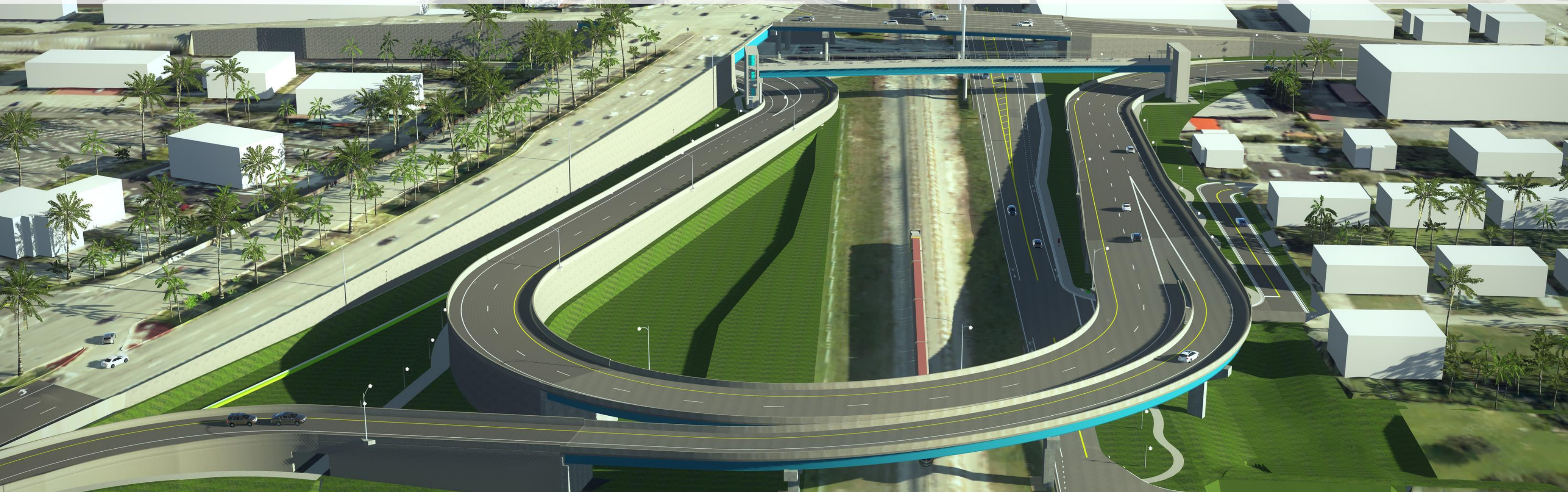


NE 203 Street/Ives Dairy Road Intersection Improvement Project



FLORIDA DEPARTMENT OF TRANSPORTATION
WEDNESDAY, JUNE 9, 2021

SKYLAKE
HIGHLAND LAKES AREA
HOMEOWNERS ASSOCIATION
PRESENTATION

NE 203 Street Intersection Improvement Project

PROJECT TEAM

Ivan Hay, P.E. - FDOT North Miami-Dade Resident Engineer

Dru Badri, P.E. - FDOT North Miami-Dade Assistant Resident Engineer

John Garzia, P.E. - FDOT Senior Construction Project Engineer

Sergio Gonzalez, P.E. - Senior Project Engineer, Pinnacle Consulting Enterprises, Inc.

Mario Vega, P.E. - Project Administrator, Pinnacle Consulting Enterprises, Inc.

Heather M. Leslie - Senior Community Outreach Specialist, HML Public Outreach

Contractor performing the work - Condotte America, Inc.

NE 203 Street Intersection Improvement Project

PROJECT INFORMATION

Boundaries – Intersection of NE 203 Street/Ives Dairy Road between State Road (SR) 5/ US 1/Biscayne Boulevard and West Dixie Highway

Construction Timeline – fall 2021 through winter 2024

Estimated Project Cost – \$41.3 million, project fully funded for construction



NE 203 Street Intersection Improvement Project

MAIN OBJECTIVES

Traffic Capacity Improvement

- Use of the FEC and Brightline rail is expected to increase significantly
- New bridges will eliminate the rail crossing for motorists and pedestrians
- Project provides two additional eastbound lanes by widening the NE 203 Street bridge



NE 203 Street Intersection Improvement Project

PROJECT INFORMATION

Scope of work

- Elevating westbound NE 203 Street over the Florida East Coast Railway (FEC) railroad track and West Dixie Highway
- Constructing a pedestrian bridge over the FEC corridor
- Widening the roadway along southbound US 1 and eastbound NE 203 Street, including the bridge
- Improving drainage
- Updating pedestrian ramps, signage, pavement markings and lighting
- Installing bicycle lane along West Dixie Highway between NE 206 Street and NE 202 Street

NE 203 Street Intersection Improvement Project

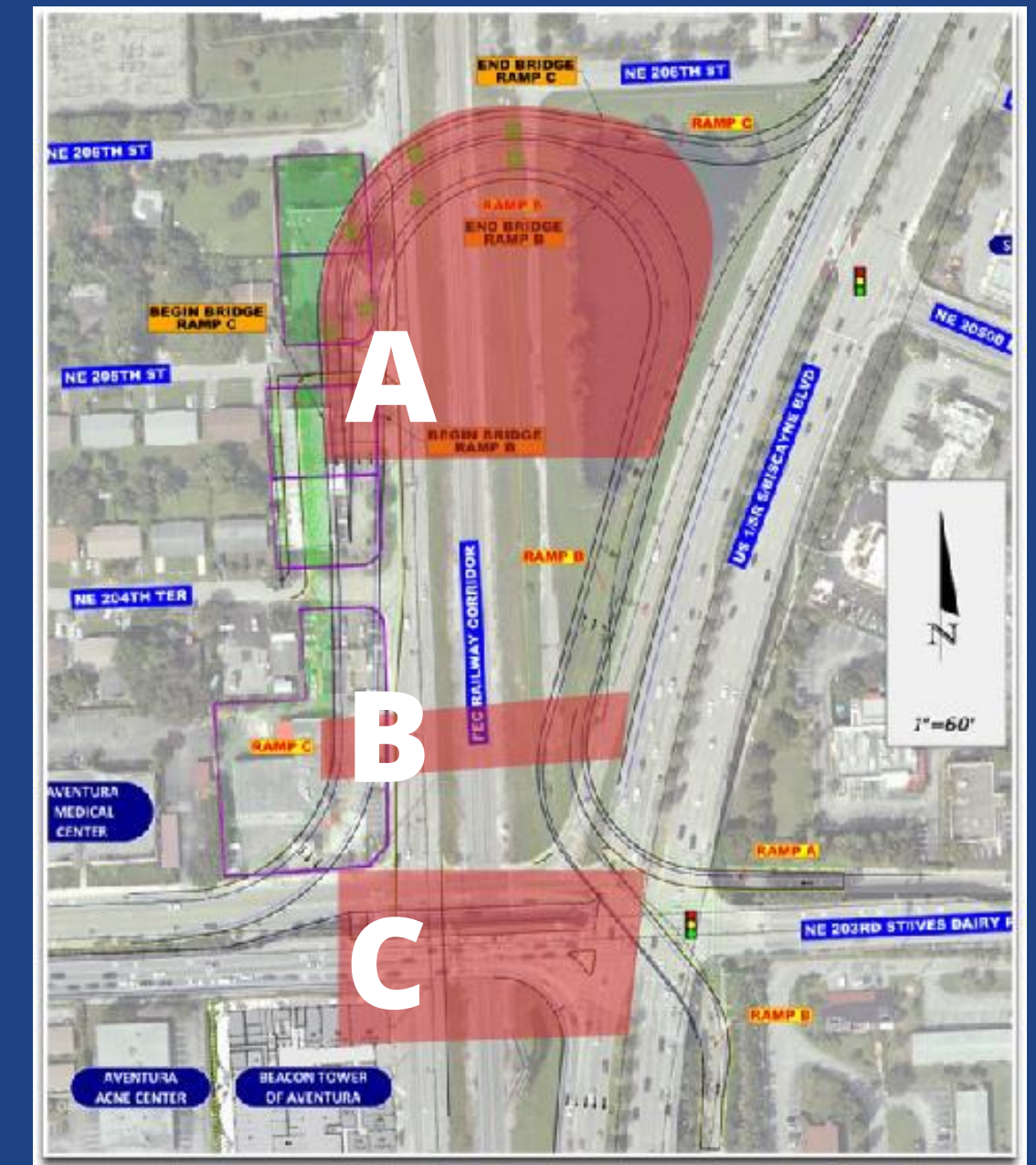
PROJECT HIGHLIGHTS



A New ramps over FEC railroad and West Dixie Highway

B New pedestrian bridge with two elevator towers

C Expanding roadway and new turn lanes



NE 203 Street Intersection Improvement Project

WHAT TO EXPECT

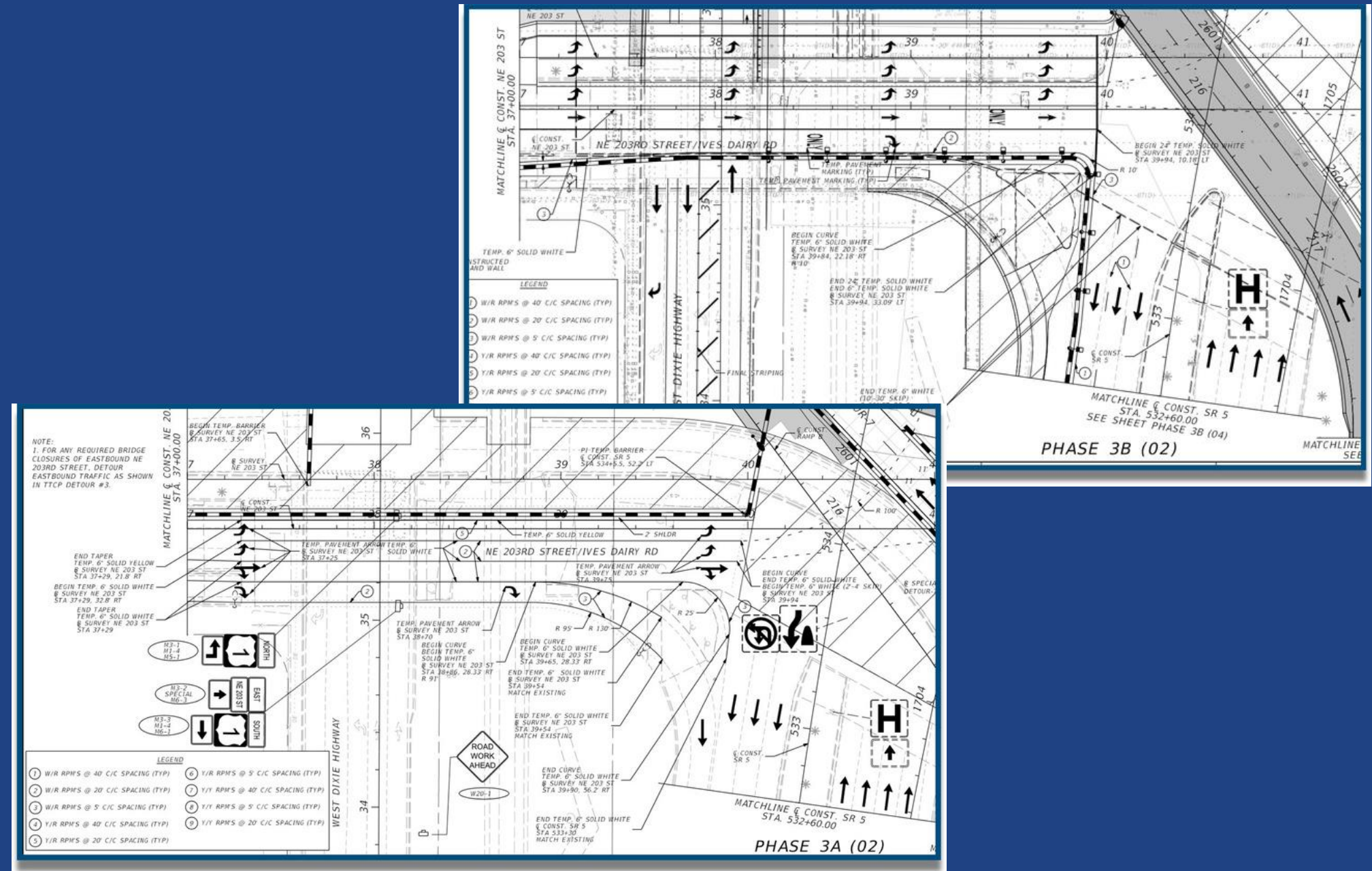
- Dust and noise
- Vibration
- Vehicular traffic impacts
 - Permanent work zones
- Pedestrian impacts
 - Sidewalk closures and detours
- Heavy equipment and construction crews in and around area



NE 203 Street Intersection Improvement Project

LANE CLOSURES AND DETOURS

- Permanent work zones will be established to build the bridges
- Pedestrian detours as needed
- Nighttime full intersection closures will be coordinated in advance
- Lane closure hours:
 - Daytime: 9 a.m. to 3:30 p.m.
 - Nighttime: 9 p.m. to 5:30 a.m.



NE 203 Street Intersection Improvement Project

MITIGATION EFFORTS

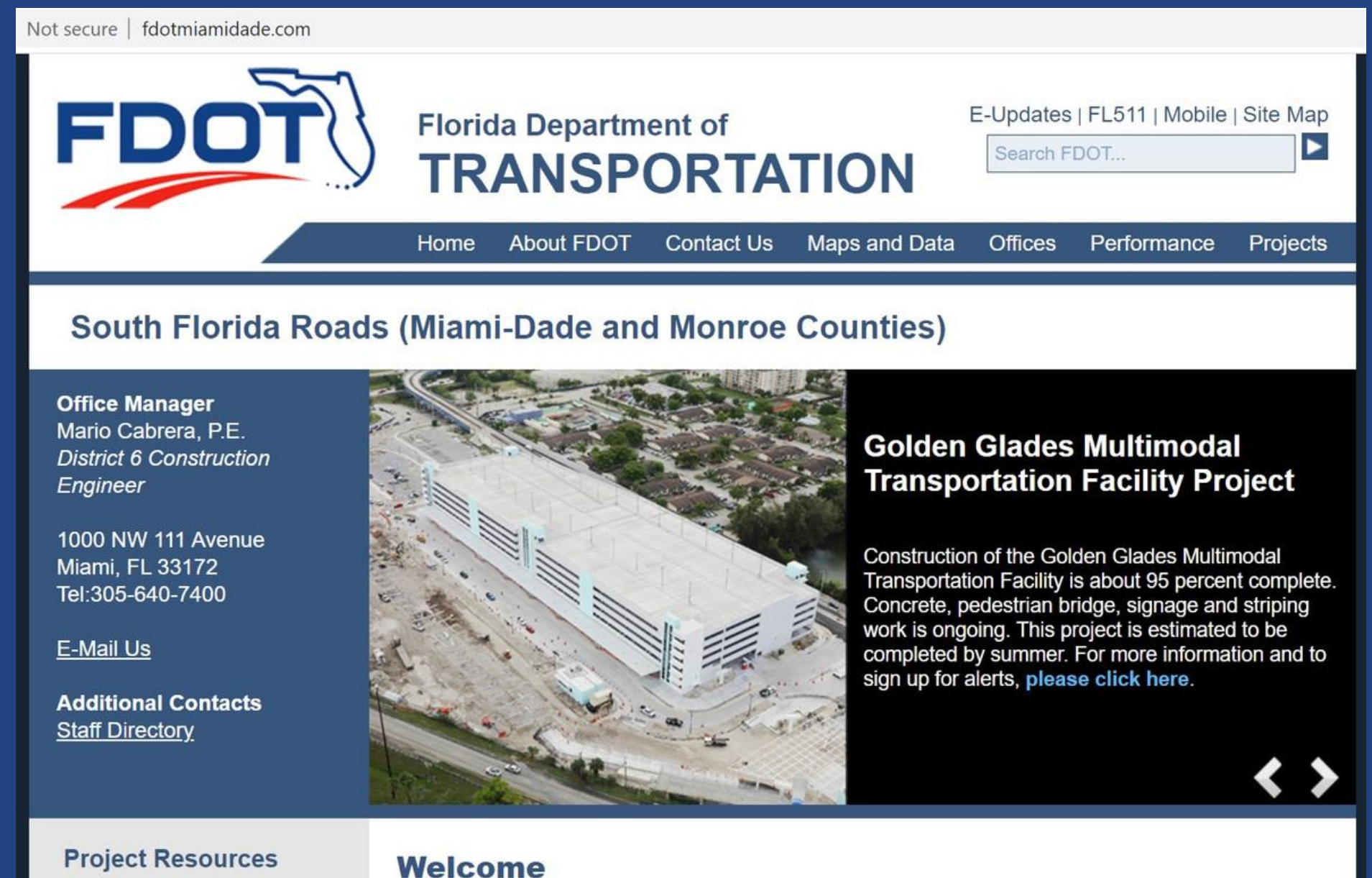
- Opening permanent work zones as quickly as possible
- Coordinating work with businesses to minimize impacts
- Clearly signed roadway and pedestrian detours highlighting alternate routes
- Frequent watering and sweeping
- Vibration monitoring as needed
- Certified flagmen as needed



NE 203 Street Intersection Improvement Project

OUTREACH PLAN

- Community Outreach Specialist, 24/7 service
- Flyer distribution
- Meetings and presentations
 - Available to meet at community groups and one on one
- Electronic project updates
- Construction website
 - Project information
 - Lane closure information
 - Can submit questions/feedback





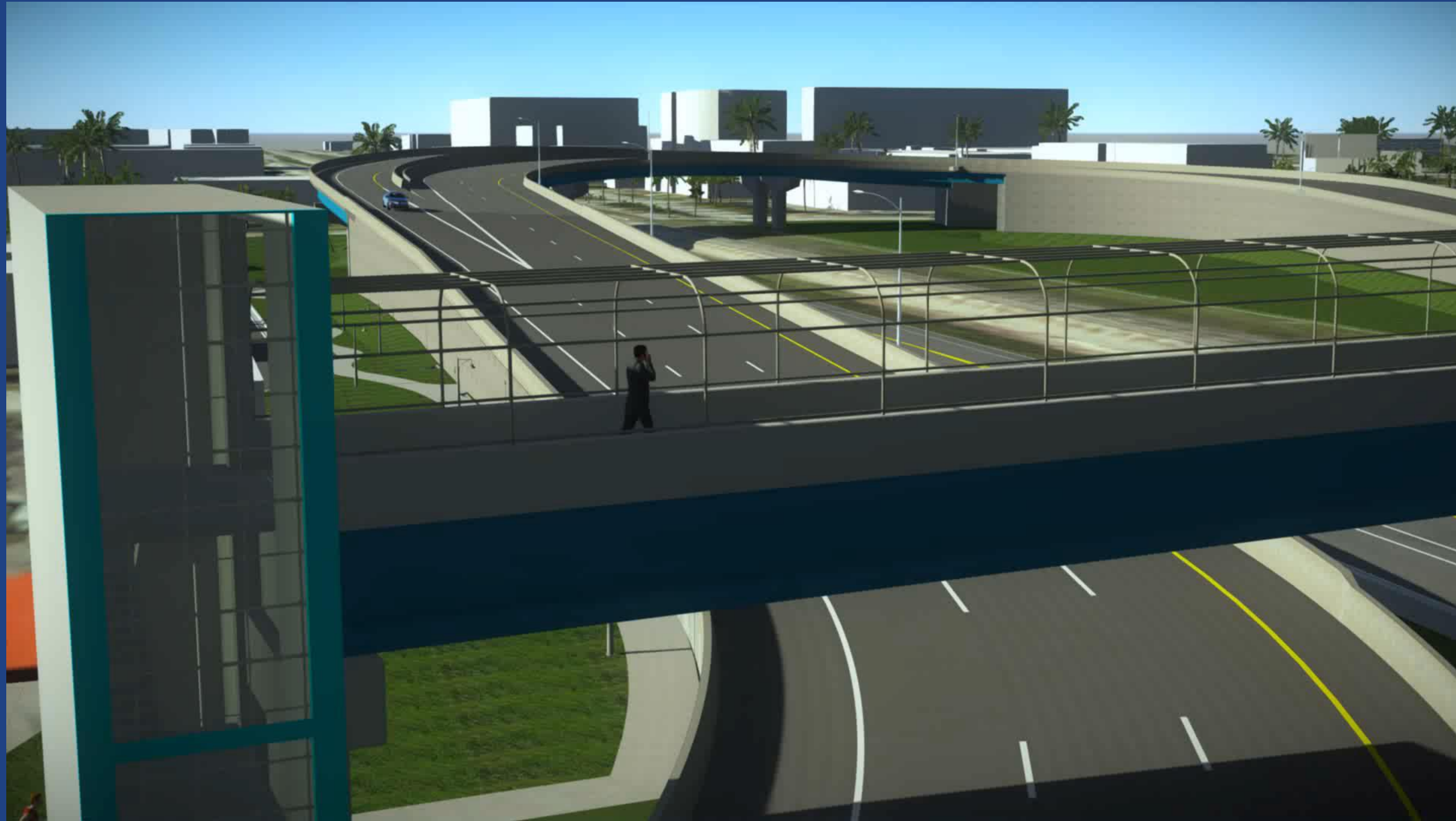
FOR MORE INFORMATION

Please contact Senior Community Outreach Specialist Heather M. Leslie at 305-905-5876 or via email at heather@hmlpublicoutreach.com.

You may also visit the website at:
www.fdotmiamidade.com.

NE 203 Street Intersection Improvement Project

PROJECT OVERVIEW VIDEO



FLORIDA DEPARTMENT OF TRANSPORTATION

